

Technical Information

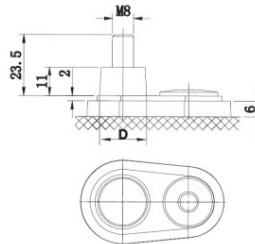
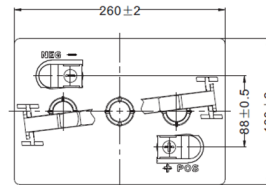
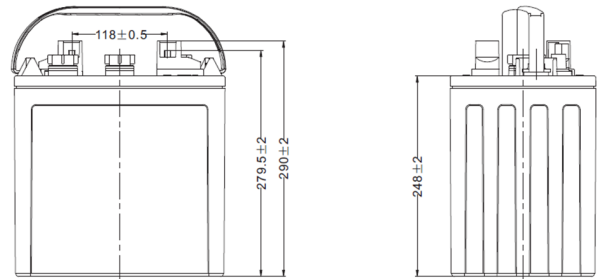
The Predator GC2-DT126-240 is an industrial deep cycle battery designed specifically for golf cart, scissor lift, floor scrubber and similar motive power applications.

This battery features enhanced SiO₂ – PVC Nano Grade separators for maximum performance and durability.

The proprietary design caps are have been developed to minimise water loss during use.

Charging

Absorb Charge Voltage: 7.35-7.5V
 Recommended Charge Current: 24A
 Maximum Charge Current: 60A



Terminal		
D	Positive	19.5 ^{+0.3}
	Negative	17.9 ^{+0.3}

Features & Benefits

- Thick plates for dimensional stability
- Optimised for high cycle motive applications
- Proprietary alloy and paste composition
- Cap design reduces water consumption
- High conductivity terminals

Applications

Golf Carts

Scissor Lifts & Floor Scrubbers

Off Grid Power Storage

Technical Specifications

Battery Type	Lead Antimony Deep Cycle	Case Material / Colour	Polypropylene / Black
Voltage	6V	Lid Type / Colour	Accessible / Black
Capacity (20Hr / 5Hr)	240Ah / 195Ah	Plate Type	Cast Grids
Reserve Capacity (25A)	485 minutes	Separator Type	SiO ₂ – PVC Nano Grade
Reserve Capacity (75A)	130 minutes	Assembly Layout	Diagonal
		Terminal Type	DT - M8 (UTL)
Overall Size (LxWxH)	260 x 180 x 279.5mm	Case Size	BCI GC2
Nominal Weight	28.8kg	Ledges	None